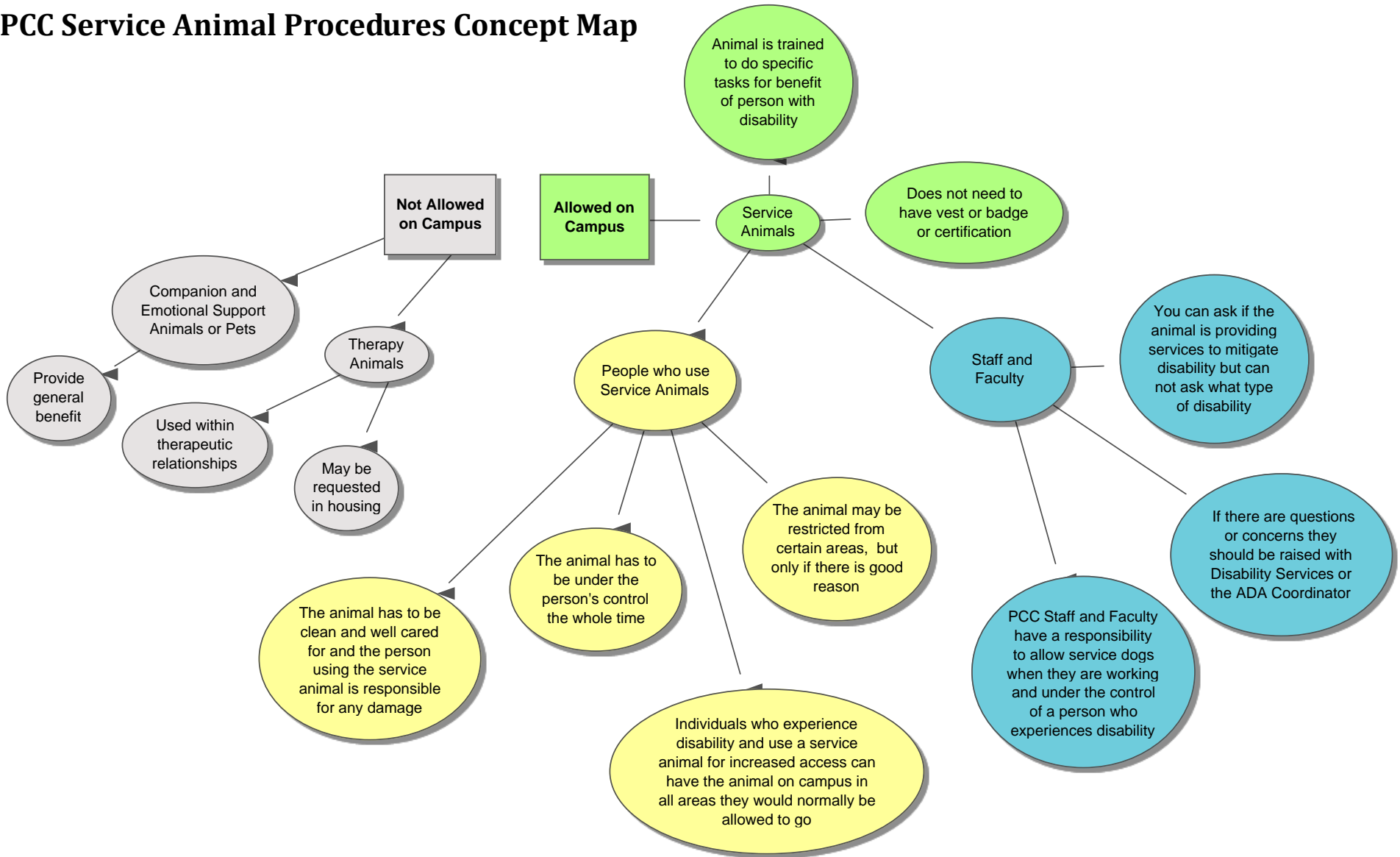


PCC Service Animal Procedures Concept Map



This Concept Map was created with Inspiration Software. PCC has site licensing for Inspiration. It creates graphic concept maps and an outline at the same time. Tools like this can help support a range of learners. Disability Services can provide training for interested groups.

Created by PCC Disability Services in April 2012

disability.services@pcc.edu

PCC Service Animal Procedures Outline

Allowed on Campus - Service Animals

- I. Animal is trained to do specific tasks for benefit of person with disability
- II. Do not need to have vest or badge or certification

III. What Staff and Faculty need to know

- A. PCC Staff and Faculty have a responsibility to allow service dogs when they are working and under the control of a person who experiences disability
- B. You can ask if the animal is providing services to mitigate disability but cannot ask what type of disability
- C. If there are questions or concerns they should be raised with Disability Services or the PCC ADA Coordinator

IV. What People who use service animals need to know

- A. Individuals who experience disability and use a service animal for increased access can have the animal on campus in all areas they would normally be allowed to go
- B. The animal may be restricted from certain areas, but only if there is good reason
- C. The animal has to be under the person's control the whole time
- D. The animal has to be clean and well cared for and the person using the service animal is responsible for any damage

Not Allowed on Campus – Pets, Therapy, Companion and Emotional Support Animals

- I. Companion Animals, Emotional Support Animals, and Pets
 - A. Provide general benefit
- II. Therapy Animals
 - A. Used within therapeutic relationships
 - B. May be requested in housing

See the PCC Service Animal Procedures for full details.

<http://www.pcc.edu/resources/disability/policies/service-animals.html>

Created by PCC Disability Services in April 2012

disability.services@pcc.edu